

8.9 T2000-40 DTMF Kit

The T2000-40 DTMF kit provides DTMF dialling facilities for T2020 model T2000 Series II radios. It consists of a small module which is fitted to the control head PCB. Once installed, all parameters (such as tone durations and hold times) can be programmed as required.

8.9.1 Fitting

- 1 Remove the four screws from the back of the control head and remove the back cover, taking care not to lose the captive nuts.

Unplug the connecting loom from the control head PCB, if required.

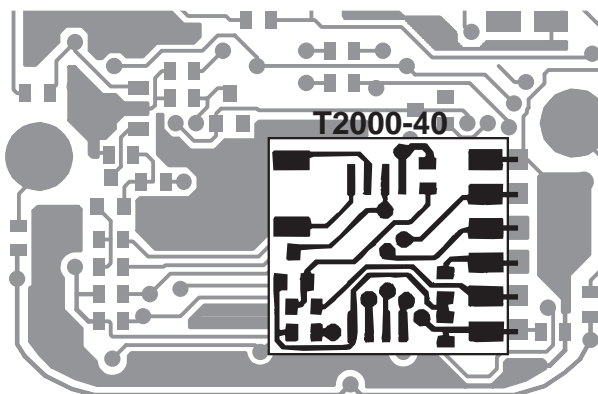
- 2 Refer to the diagram below.

Place the DTMF module flat on the control head PCB in location 'S20' with the component side facing upwards.

Solder in place, checking that each pin is correctly positioned over the appropriate pad.

- 3 Reconnect the loom (if plugged in step 1), refit the loom cable into the cable restraint in the back cover, and screw the cover back into place.

Ensure that the captive nuts are correctly located in the back cover before fitting.



T2000-40 DTMF Module Mounting - T2020 Control Head PCB (top side)

8.9.2 Programming

The radio must now be programmed with the various DTMF parameters. Refer to the manual supplied with the T2000-20 programming kit for details.

